

## brake master cylinders

1248-H/1260-H  
4408 Series

Scott Brake Master Cylinders are one of the most frequently specified units in aviation. These rugged units feature virtually trouble-free service, and few wearing parts — provide dependable braking action for a number of general aviation aircraft.

Standard equipment on Piper and other private aircraft for many years, Scott Brake Master Cylinders are available in the left- and right-hand models required by most aircraft.

# SCOTT®

## AVIATION

## 1248-H/1260-H

### Outstanding Features

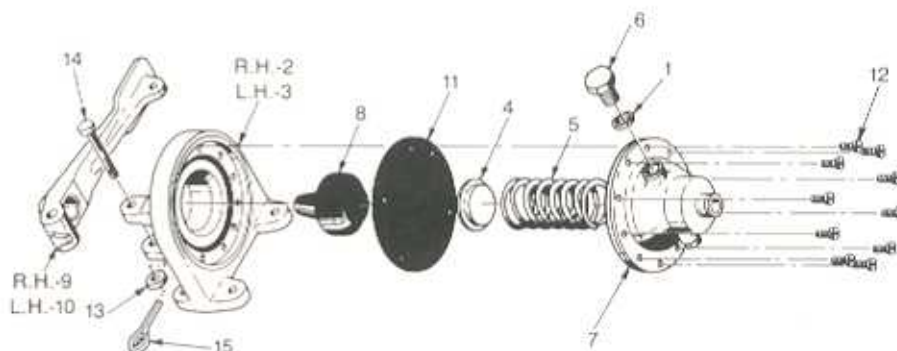
- Safe, dependable braking action
- Virtually trouble-free performance
- Few wearing parts
- Left- and right-hand models



P/N 1248-H Left Hand Master Cylinder  
P/N 1260-H Right Hand (Not Shown)

### Specifications

Displacement	.80 cu. in.
Maximum working pressure	350 lb.
Pedal pressure	100 lb.
Recommended hydraulic fluid	MIL-O-5606
Weight as shown	21 oz. dry
Maximum Pedal Travel	3 3/16 in.



### Parts List

No.	Part No.	Name	No. Req'd
1	1159	Gasket — Vent Screw	1
2	1220	Bracket — R.H. Unit	1
3	1232	Bracket — L.H. Unit	1
4	2003-1	Pad — Diaphragm	1
5	1256	Spring	1
6	1258	Screw — Vent	1
7	2728	Cover — Compression	1
8	1383	Piston	1
9	1712	Pedal — R.H. Unit	1
10	1714	Pedal — L.H. Unit	1
11	2844	Diaphragm	1
12	33359-245	Screw	10
13	33451-010	Washer (AN960-10)	1
14	18431	Pin — Flat Head	1
15	18481	Pin (AN380-2-2)	1

### WARNING

IMPROPER USE OR IMPROPER MAINTENANCE OF THIS EQUIPMENT MAY RESULT IN SERIOUS INJURY OR DEATH. THIS EQUIPMENT IS TO BE SERVICED IN ACCORDANCE WITH APPLICABLE SCOTT PROCEDURES AND ONLY BY SCOTT AUTHORIZED SERVICE TECHNICIANS KNOWLEDGEABLE IN THIS EQUIPMENT. THE NAMES OF AUTHORIZED SERVICE CENTERS ARE AVAILABLE FROM SCOTT AVIATION OR YOUR AUTHORIZED SCOTT DISTRIBUTOR.

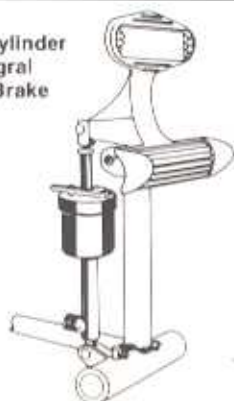
THE DRAWINGS CONTAINED IN THIS SHEET ARE PRESENTED FOR PART IDENTIFICATION ONLY AND ARE NOT INTENDED AS AUTHORITY TO PERFORM ANY TYPE OF SERVICE ON THE EQUIPMENT.

## 4408 Series

### Outstanding Features

- Positive parking brake lock lever
- Safe, dependable braking action
- Virtually trouble-free performance

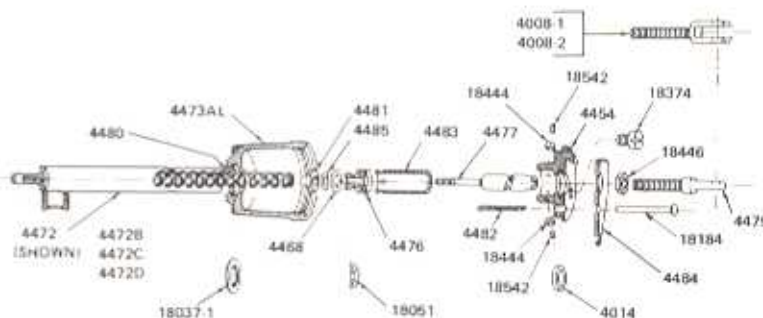
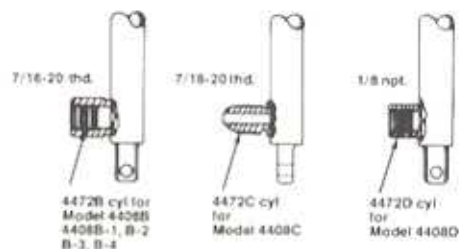
4408B-1  
Master Cylinder  
with Integral  
Parking Brake



### Specifications

Displacement	.282 cu. in.
Capacity	1.3 cu. in.
Piston Dia.	.5 in.
Output Pressure	5.09 x applied force
Empty Weight	7 oz.

### Outlet Connections



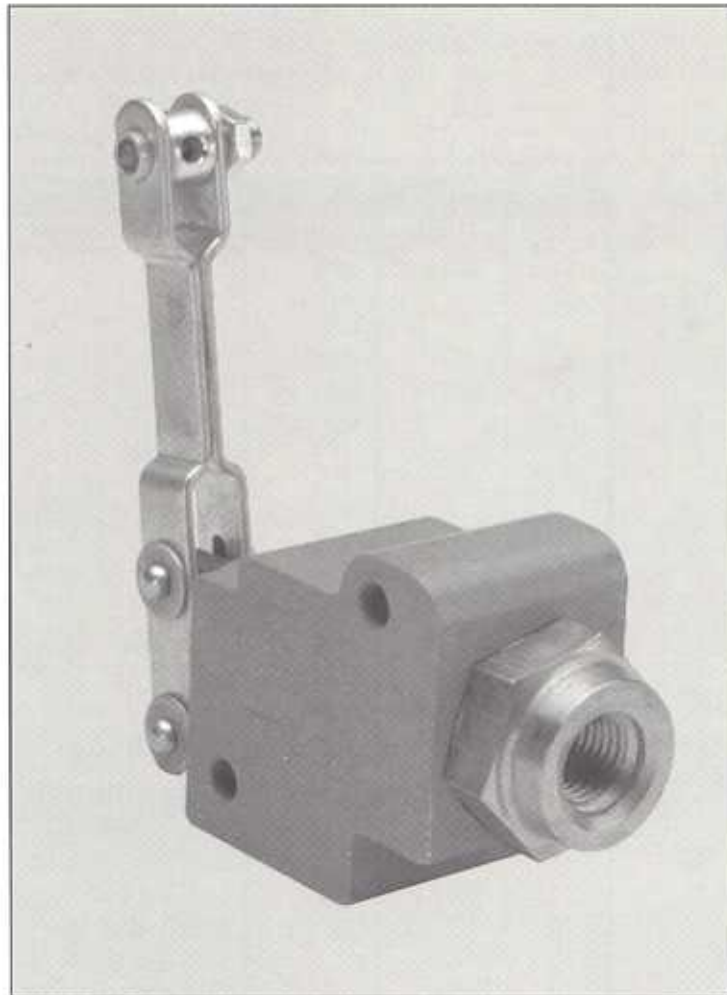
### Parts List

Part No.	Name	No. Req'd.
4408-1	Piston Clevis Rod (Used on 4408C Master Cyl.)	1
4408-2	Piston Clevis Rod (Used on Models 4408B1, 4408B2, 4408B3 and 4408B4 Master Cyl.)	1
4014	Seal — Piston Stem	1
4454	Cap — Reservoir	1
4468-1	Washer	1
4472	Cylinder Assembly	1
4472B	Cylinder Assembly	1
4472C	Cylinder Assembly	1
4472D	Cylinder Assembly	1
4473AL	Reservoir	1
4476	Piston Assembly	1
4477	Stem	1
33465-003	Nut No. 6-32 light hex	4
4479	Lug — Top Mounting (Used on Models 4408 and 4408D Master Cyl.)	1
4480	Spring	1
4481	Nut — Piston Return	1
4482	Spring — Parking Lock	1
4483	Stop — Piston	1
4484	Lock — Parking	1
4485	Spring Washer	1
33473-004	Nut	1
33551-166	Rivet	1
33351-020	Set Screw No. 6-32 x 3/8" long cup point	4
33332-077	Screw — Fillister Head 1/4 — 28 x 3/8" long	1
18037-01	O-Ring Linear 1820-11	1
18051-00	U-Cap Linear 1825-43	1



**SCOTT®**

**SAFETY IS OUR LIFE'S WORK**



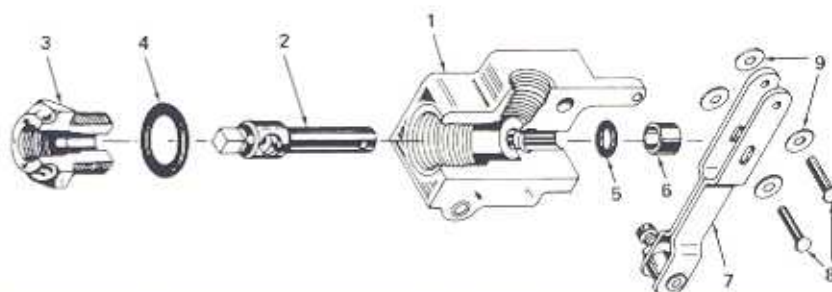
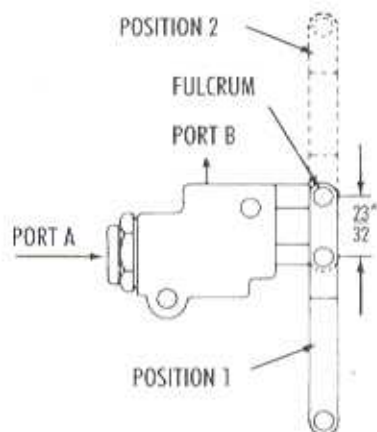
**PARKING BRAKE  
VALVES  
4500 SERIES**

Scott 4500 Parking Brake Valves are designed for trouble-free performance and low operating costs at a minimum weight. They are produced from extruded bar stock for extra strength and uniformity, and are machined to extremely close tolerances. Installation is quick and easy.

Applications include parking brake systems, helicopter rotor systems, other hydraulic uses, and pneumatic pressure controls.

## OUTSTANDING FEATURES

- Low cost operation
- Lightweight
- Trouble-free performance
- Quick, easy installation



### SPECIFICATIONS

Model	#4500-Series
Weight:	33 LBS.
Maximum Working Pressure:	1500 PSI
	Molded rubber valve seat designed for use with hydraulic fluids per Specification MIL-Q-5606.
	Mounting holes extended through valve body.

### PARTS LIST

No.	Part No.	Used On	Name	No. Req'd
1	4501-2	4500 4500-A1 4500-A2 4500S	Body	1
1	4501	4500S-A1 4500S-A2	Body	1
2	4504 4505 4506-1 4507 13351-00	4500	Stem Assembly Stem Valve Head Spring Spring Pin	Included in assembly No. 4504
3	4511-2	4500-A1 4500-A2 4500S	Seat — valve	1
3	4511	4500S-A1 4500S-A2	Seat — valve	1
4	AN6227B-11 (33535-011)		O-ring 3/4" (19 MM) O.D. x 9/16" (14 MM) I.D.	1
5	AN6227B-5 (33535-005)		O-ring 3/8" (10 MM) O.D. x 1/4" (6 MM) I.D.	1
6	4503		Spacer (used with arm pos. 1)	1
6	4503-1		Spacer (used with arm pos. 2)	1
7	4208		Arm Assembly	1
8	18286		Rivet 3/32" (2 MM) x 5/8" (16 MM) R.H. steel	2
9	4222		Washer — burr, steel	4

### AVAILABLE MODELS

Model No.	Port A	Port B	Arm Position
4500	1/8 ANPT	1/8 ANP	No Arm
4500-A1	1/8 ANPT	1/8 ANPT	1
4500-A2	1/8 ANPT	1/8 ANPT	2
4500S	7/16-20 NF	7/16-20 NF	No Arm
4500S-A1	7/16-20 NF	7/16-20 NF	1
4500S-A2	7/16-20 NF	7/16-20 NF	2

# SCOTT®

**SAFETY IS OUR LIFE'S WORK**

SCOTT AVIATION • LANCASTER, NEW YORK 14086 • PHONE: 716-683-5100 • FAX: 716-681-1089